

OFGO STUDIO

Crafted for the modern workspace, WORKWAY™ Planters allow for space division while helping to enrich any environment. WORKWAY™ Planters promote wellness, creativity and productivity by introducing biophilia elements that inject vibrancy into any space.

All planter styles are compatible with OFGO STUDIO desking, benching and reception solutions. Whether you're looking to simply add some greenery, create a warm welcome, or divide space, WORKWAY™ Planters are ready to be planted.

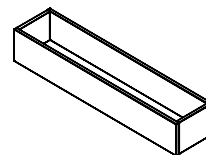
FEATURES

- Comprised of solid core, 45 lbs/ft³ density particle board, finished on both sides with thermofused laminate, offering premium quality abrasion and stain resistant surfaces.
- Surfaces and side panels are edged on all four sides with INVISA™ edgeband technology.
- Units are available in three styles: (a) Planter Topper, (b) Freestanding Bookcase Planter, (c) Dual Sided Bookcase Planter.
- Freestanding Bookcase and Dual Sided Bookcase units include height adjustable floor levelers; floor levelers offer additional space between side panels and floor, minimizing moisture damage from floor.
- Available in all OFGO STUDIO standard TFL finishes.
- All Freestanding Bookcase and Dual Sided Bookcase planter units are shipped assembled. Planter Toppers are shipped knocked down.
- Planter boxes can be used with artificial plants or live potted plants that contain water collection trays only. Do not fill directly with soil. Planter boxes are not waterproof; should water leak into the planter box, please wipe dry immediately to avoid damage.
- Meets Indoor Air Quality certification standards.

STYLES & SIZING

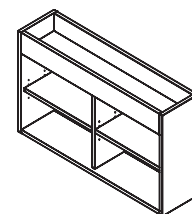
Planter Topper Box:

- Widths: 18", 24", 30", 36", 42", 48", 54", 60", 66", and 72"
- Depths: 8" or 18"
- Heights: 6" or 9"
- Inside clearance height: 5.3" high on the 6" topper box, and 8.3" high on the 9" topper box



Freestanding Bookcase Planter Box:

- Widths: 18", 24", 30", 36", 42", 48", 54", 60", 66", and 72"
- Depths: 12" or 18"
- Heights: 29", 36", and 41"
- Inside Planter clearance height: 5" high on the 29"h unit, and 8" high on the 36" and 41"h unit.
- Inside Planter clearance width and depth is approx 2" less than the overall unit width and depth.



Dual Side Bookcase Planter Box:

- Widths: 30", 36", 42", 48", 54", 60", 66", and 72"
- Depths: 12" or 18"
- Heights: 29", 36", and 41"
- Inside Planter clearance height: 5" high on the 29"h unit, and 8" high on the 36" and 41"h unit.
- Inside Planter clearance width and depth is approx 2" less than the overall unit width and depth.

