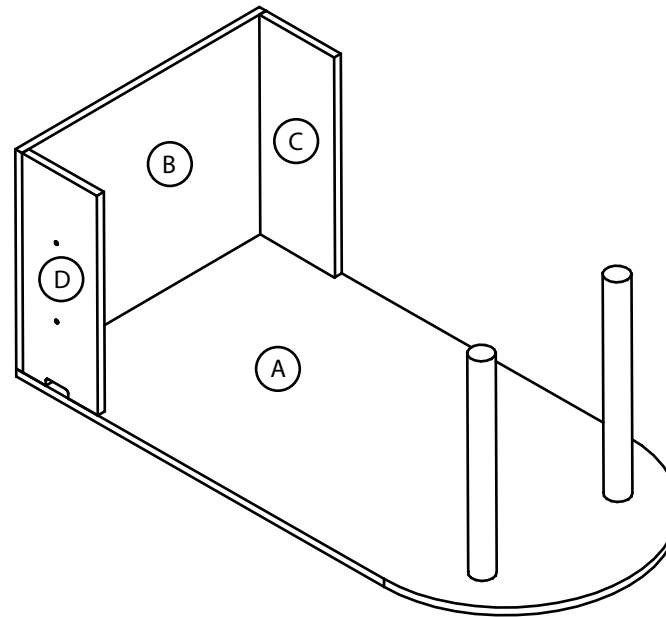


L-DT-EH-C Shaped Table

ASSEMBLY SEQUENCE	
1	Insert PINS and CAMS into A & B and lock into place (as per figure 1.1)
2	Insert PINS and CAMS into A & C and lock into place (as per figure 1.1)
3	Insert PINS and CAMS into A & D and lock into place (as per figure 1.1)
4	Attach the column leg(s). Note: 24" to 30" deep surfaces will have 1 column leg. 36" deep surfaces will have 2 column legs.
5	Thread floor levelers into T-Nuts located at the bottom of all the side panels on B, C and D.
6	Place cover caps over all CAMS and carefully flip the unit over. Once the unit is flipped over it is ready to be connected to an adjacent unit.
7	In order to join two units together. Use the male and female connecting bolts and nuts provided and insert into the through holes on the 12" side panel. See image in figure 1.2.



3/4 turn to lock pin and cam

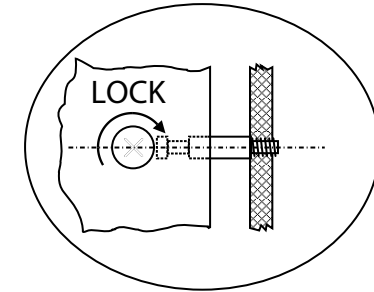


Figure 1.1

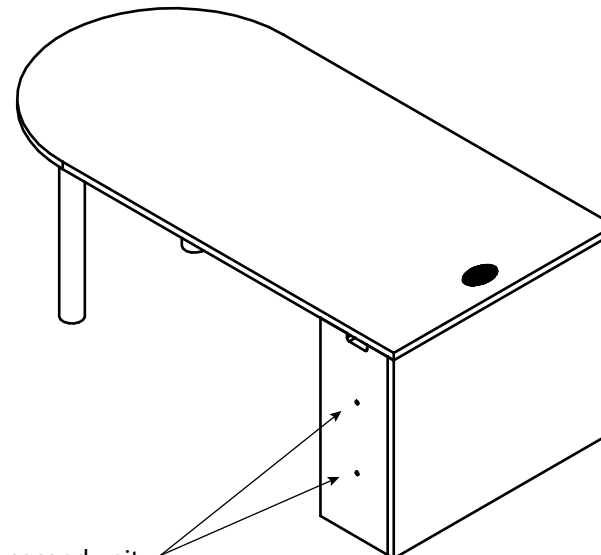
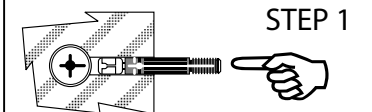


Figure 1.2

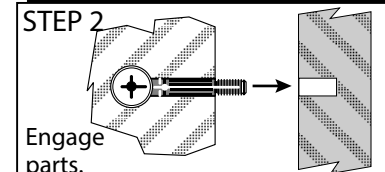


Holes to join to second unit

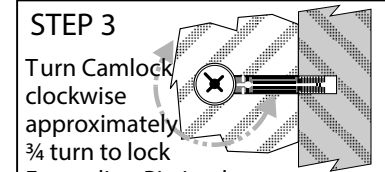
EXPANDING PIN INSTALLATION



Push Expanding Pin(s) into Camlock(s), with groove in Pin Sleeve oriented as shown.



Engage parts.



Turn Camlock clockwise approximately 3/4 turn to lock Expanding Pin in place.