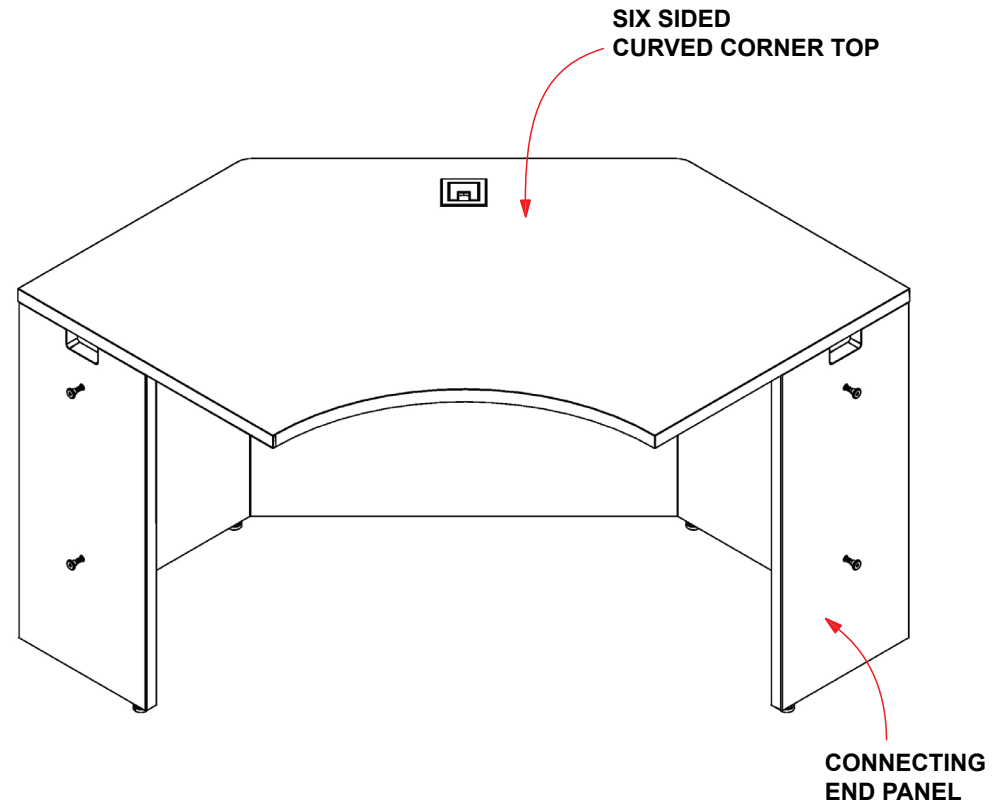
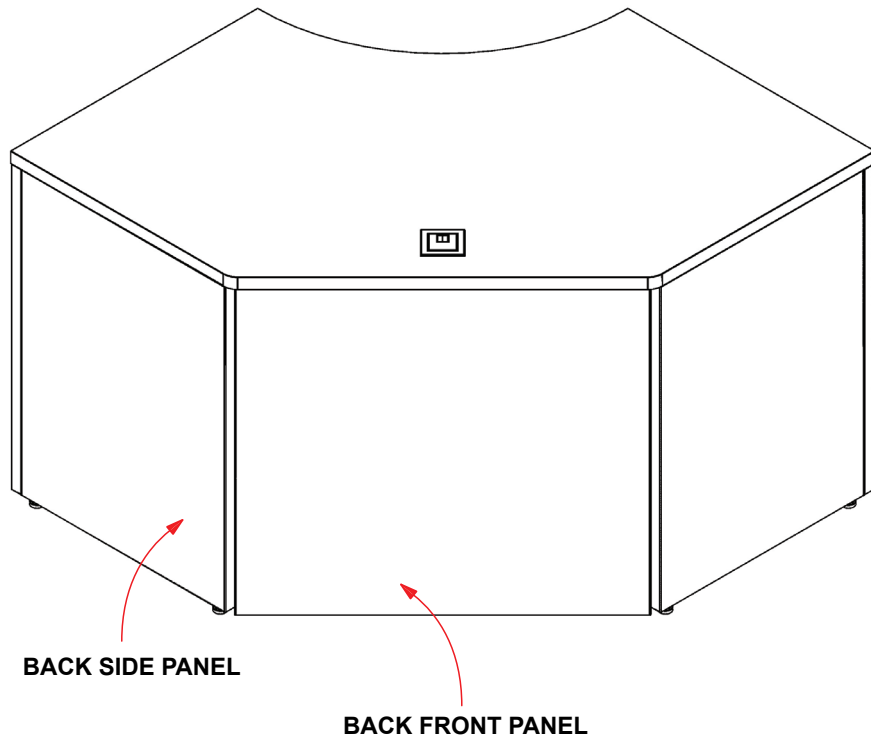


COMPONENT BREAKDOWN:



DISCLAIMERS

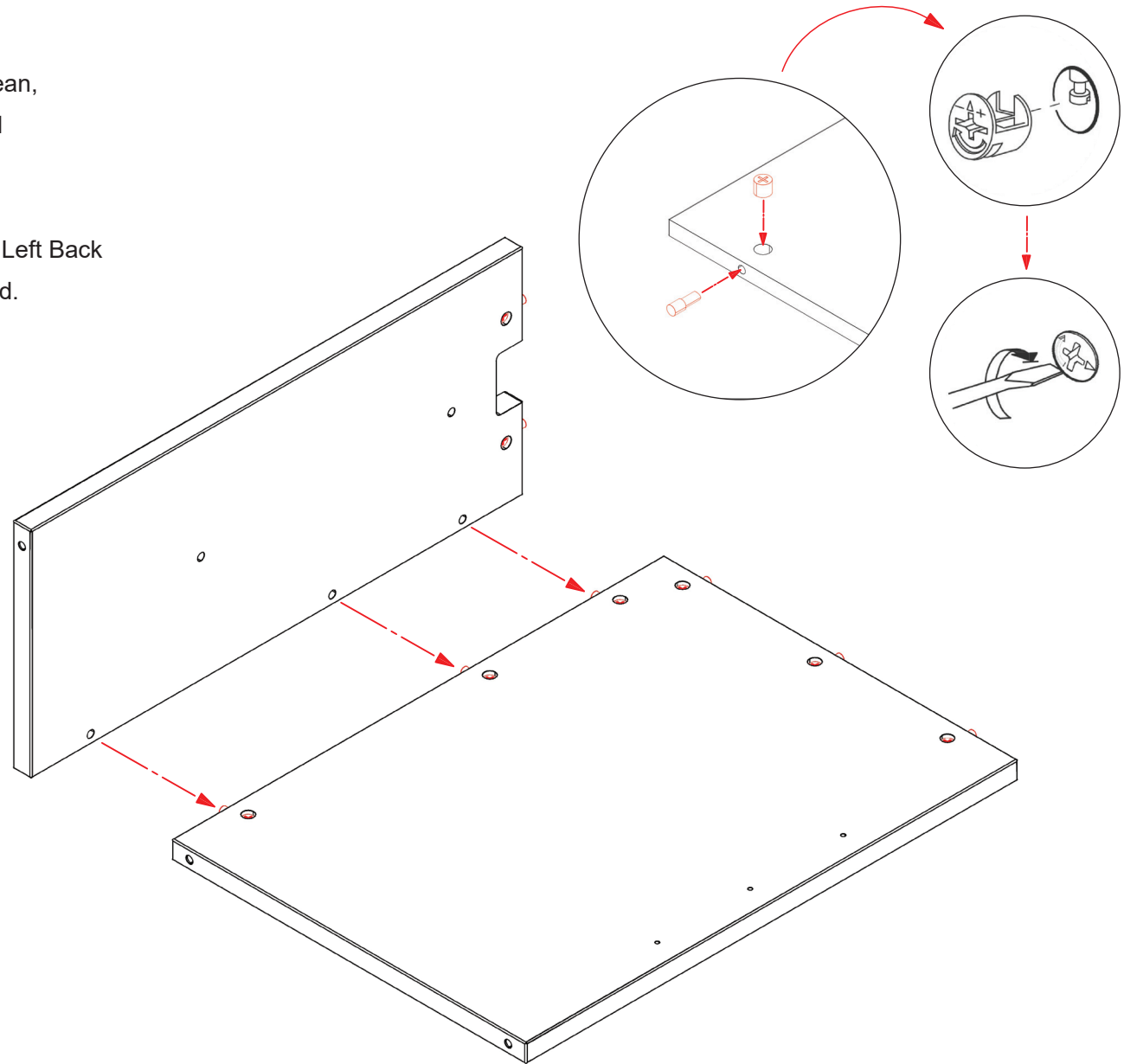
- Use all hardware provided to secure components as specified.
- This installation will require 2 or more people.
- Read all instructions and review all illustrations before installing. Failure to observe these warnings could result in injury.
- Product that is damaged by the end user due to misuse, accident, abuse, negligence or shipping is not covered under warranty.

STEP ONE:

Place the Left Back Side Panel on a soft, clean, scratch-resistant surface, with the pre-drilled holes facing upwards.

Align the 1st Connecting End Panel into the Left Back Side Panel using the pins and cams provided.

Lock the pins into place by turning the cams clockwise approximately 3/4 of a turn.

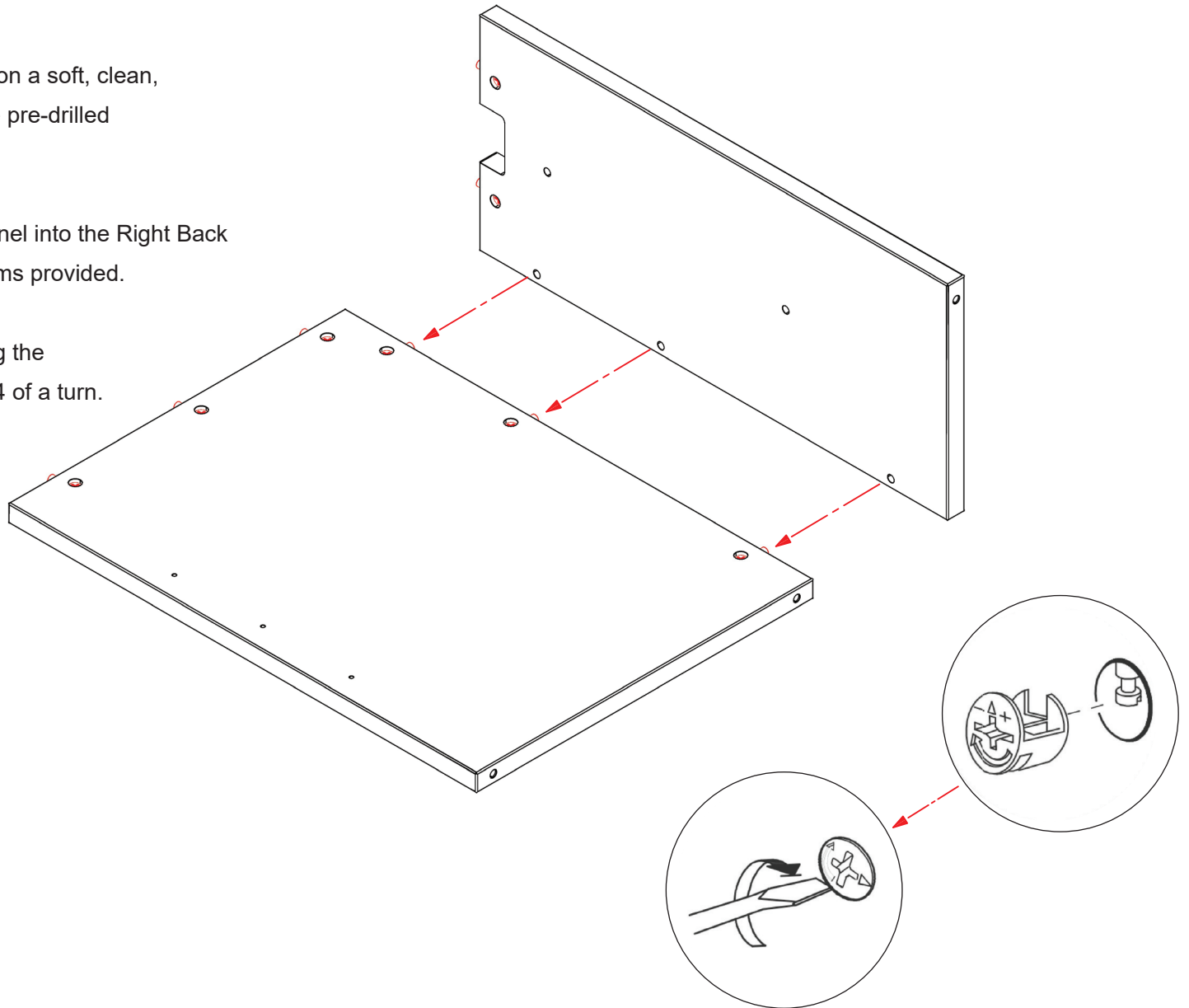


STEP TWO:

Place the Right Back Side Panel on a soft, clean, scratch-resistant surface, with the pre-drilled holes facing upwards.

Align the 2nd Connecting End Panel into the Right Back Side Panel using the pins and cams provided.

Lock the pins into place by turning the cams clockwise approximately 3/4 of a turn.



STEP THREE:

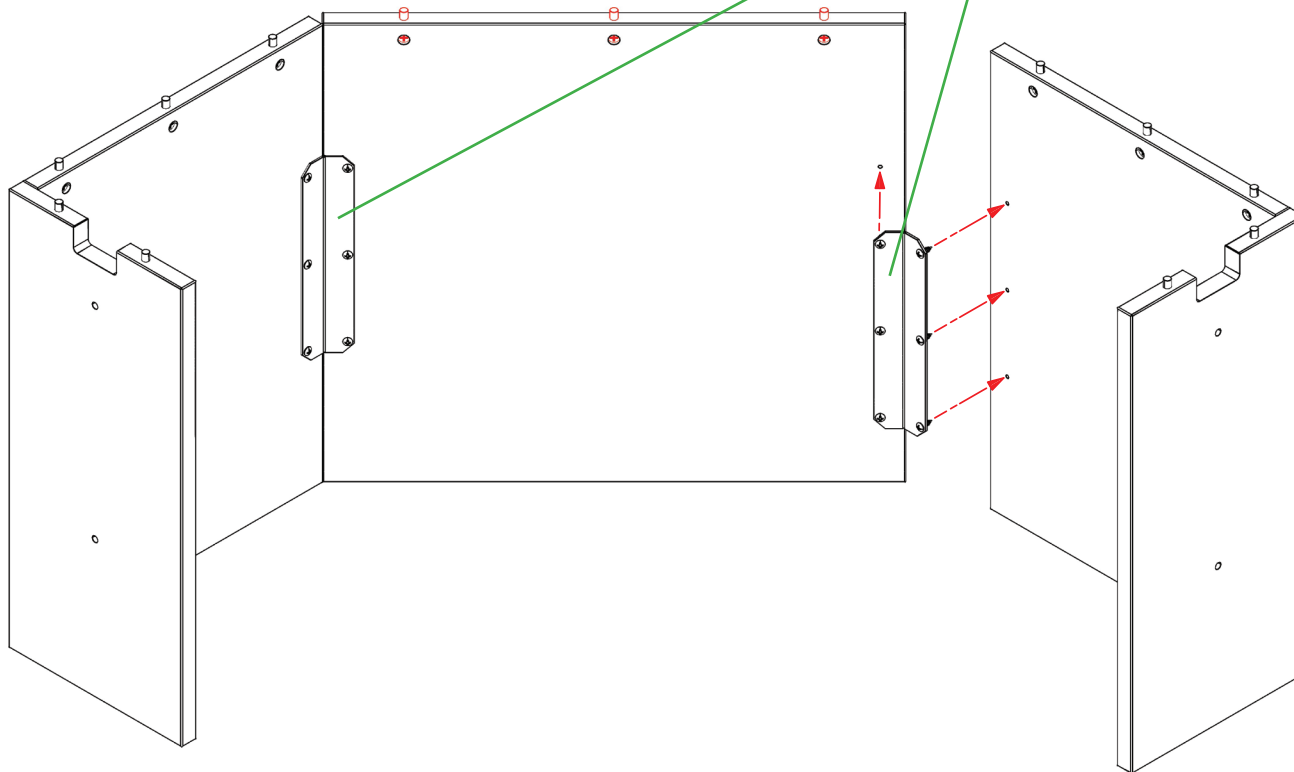
Use the angled bracket connector to engage both the Left & Right Back Side Panels with the Front Back Panel and screw into place on both sides.



Note: Alternative to the single long bracket shown in the image below, the model you recieved may instead be provided with the following hinged brackets.

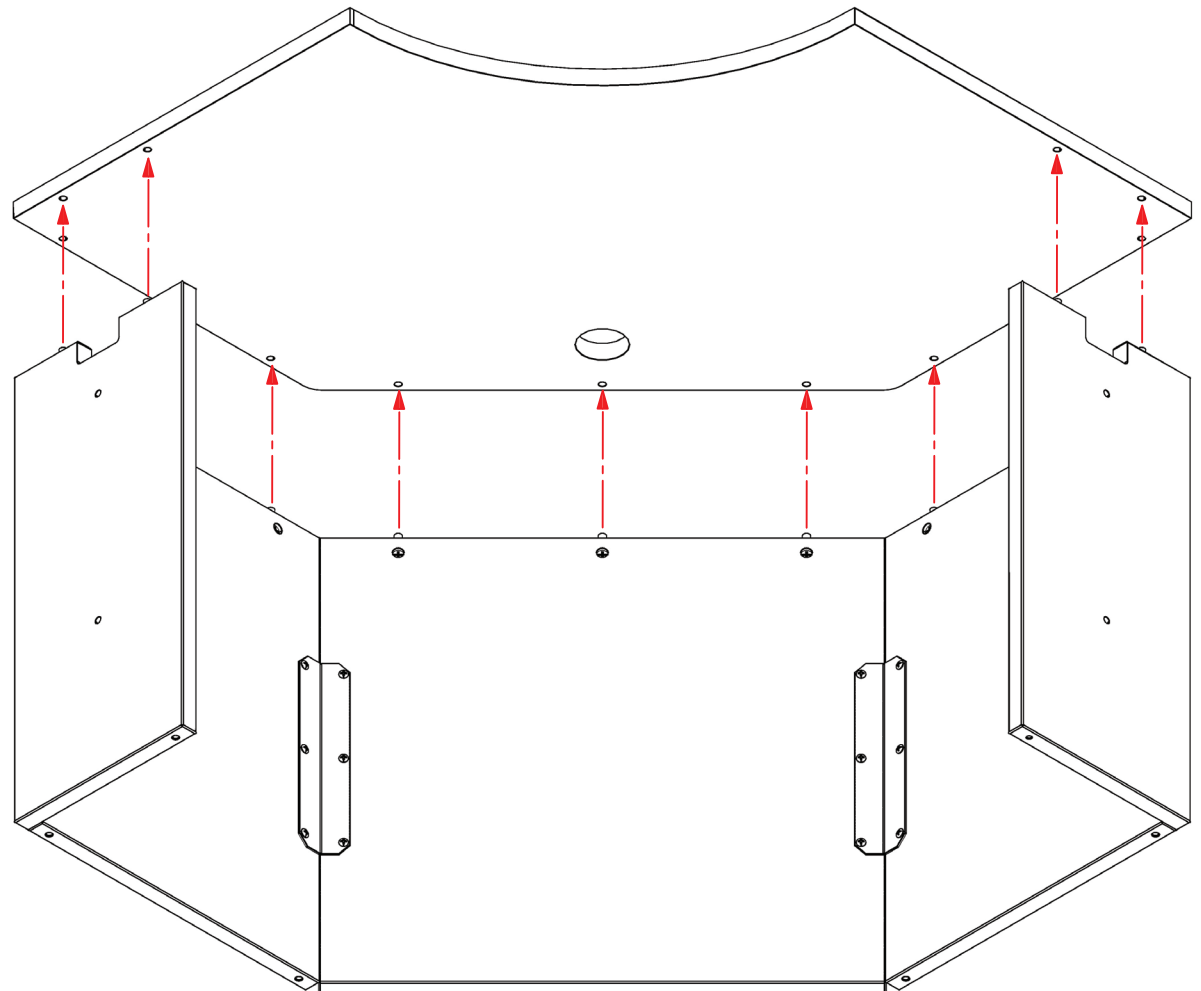


Qty 4 hinged brackets would be required (2 on each side of the back). Pilot holes on the back panels will indicate correct positioning.



STEP FOUR:

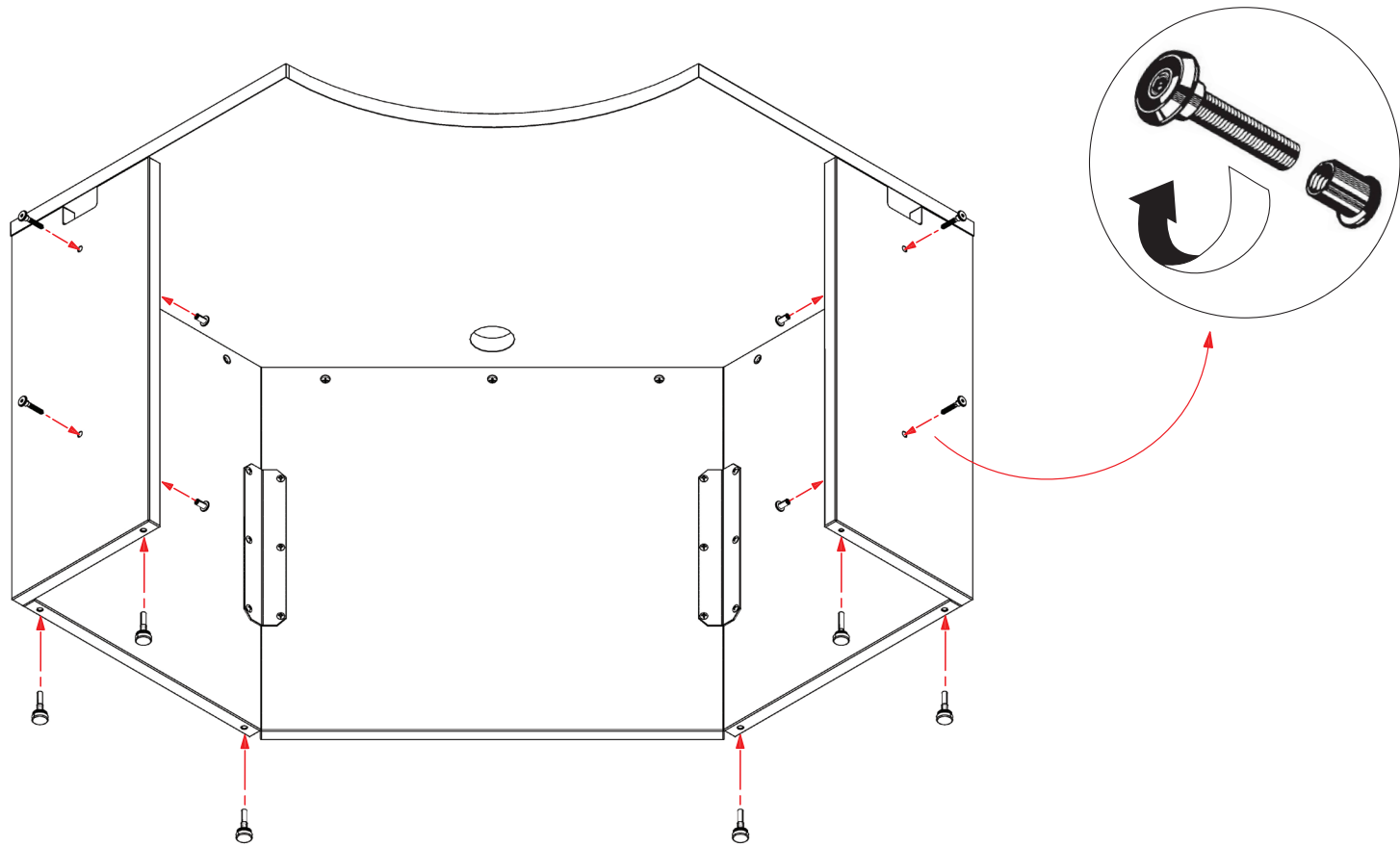
Place the worksurface on top of the base unit, aligning the expanding pins with the pre-drilled holes on the worksurface. Turn all camlocks clockwise approximately 3/4 turn to lock them in place.



STEP FIVE:

Place the floor levelers into the T-Nuts located at the bottom of the unit.

Use the connecting bolts provided to attach this corner unit to the additional connecting desk shells specified on your order.



STEP SIX:

Ensure the grommet is placed into the worksurface.

